

8 DFCa technical data

Type DFCa	Feed rate in l/U	P max. in bar	Flow rate at max. pressure in l/h	Rollers/shoes Shoes	Hose interior \varnothing in mm	Solids max. \varnothing in mm	Weight without drive in kg	Connector
030	0.43	8	700	Rollers	28	7.0	62	1 1/4"
040	0.81	8	1550	Rollers	35	8.8	89	1 1/2"
050	1.46	8	2400	Rollers	40	10.0	140	DN 40
060	3.12	8	6000	Rollers	55	13.8	235	DN 50
070	8.05	8	12000	Rollers	65	16.3	440	DN 65
70D	15.83	4	25000	Rollers	65	16.3	850	DN 80

8.1 Dimensions DFCa 030

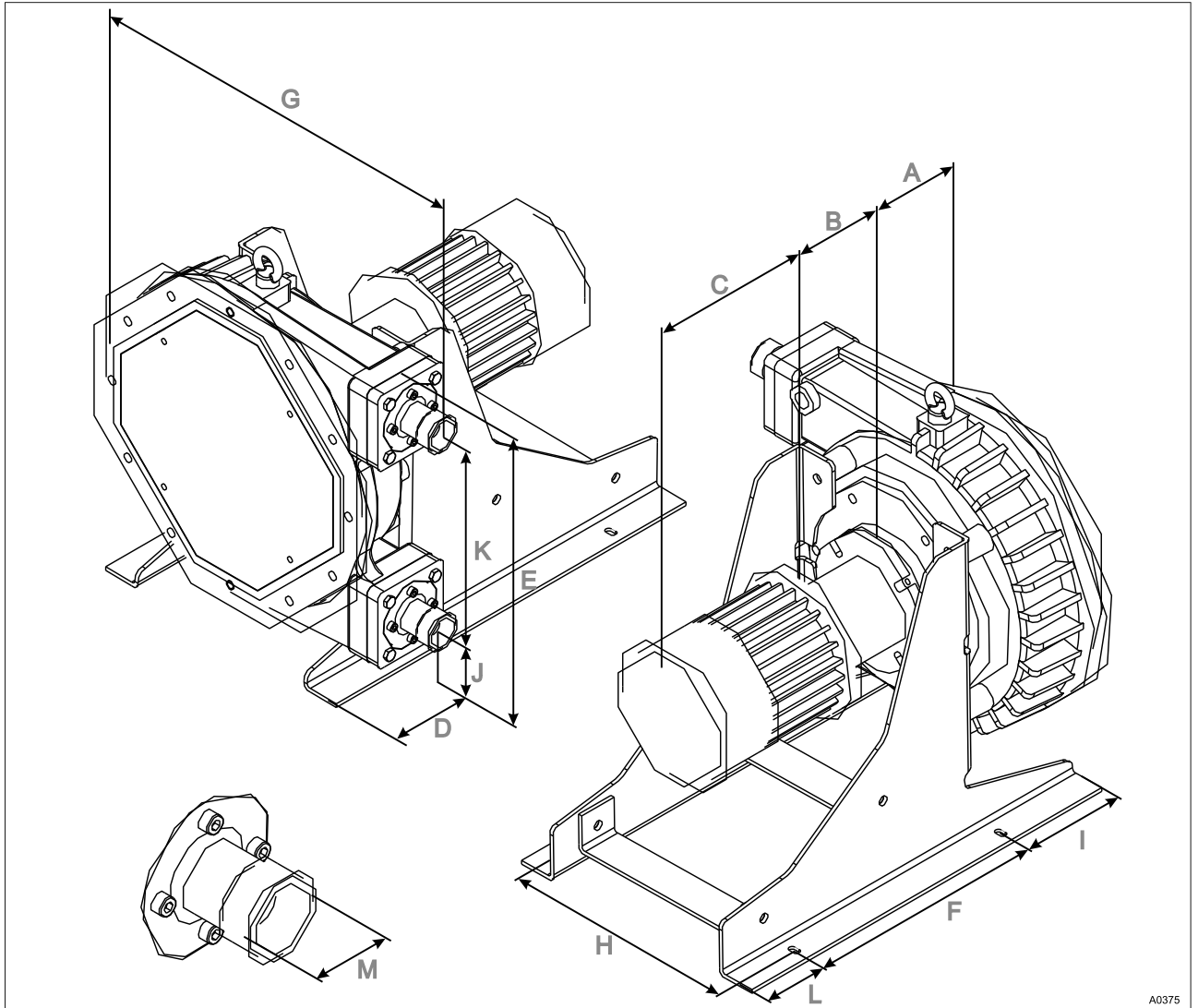
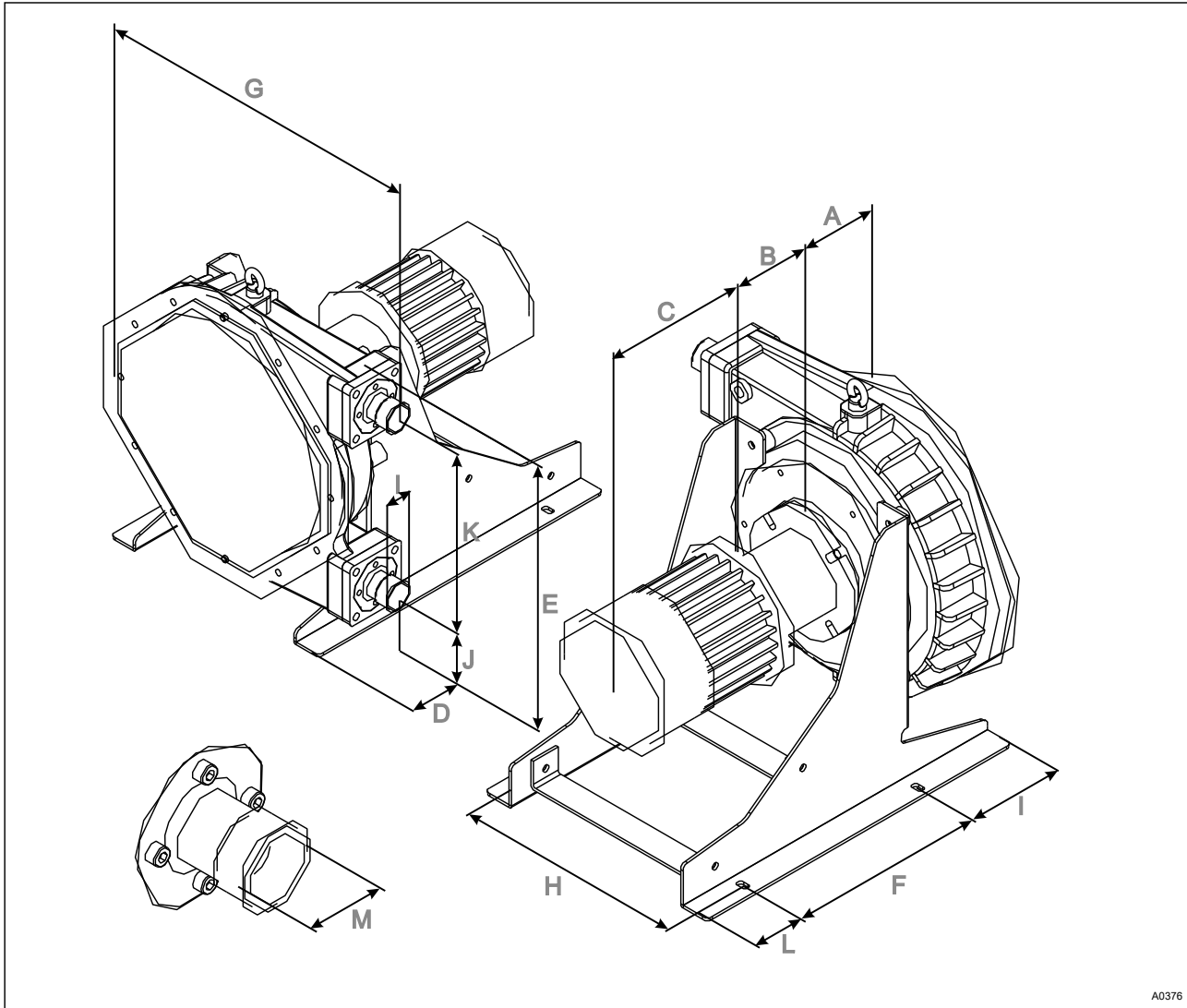


Fig. 14: Dimensions DFCa 030

A	127.5 mm
B	*
C	*
D	60 mm
E	425 mm
F	305 mm
G	471 mm

H	305 mm
I	160 mm
J	100 mm
L	75 mm
M	1 1/4"
*	Dependent on selected drive

8.2 Dimensions DFCa 040



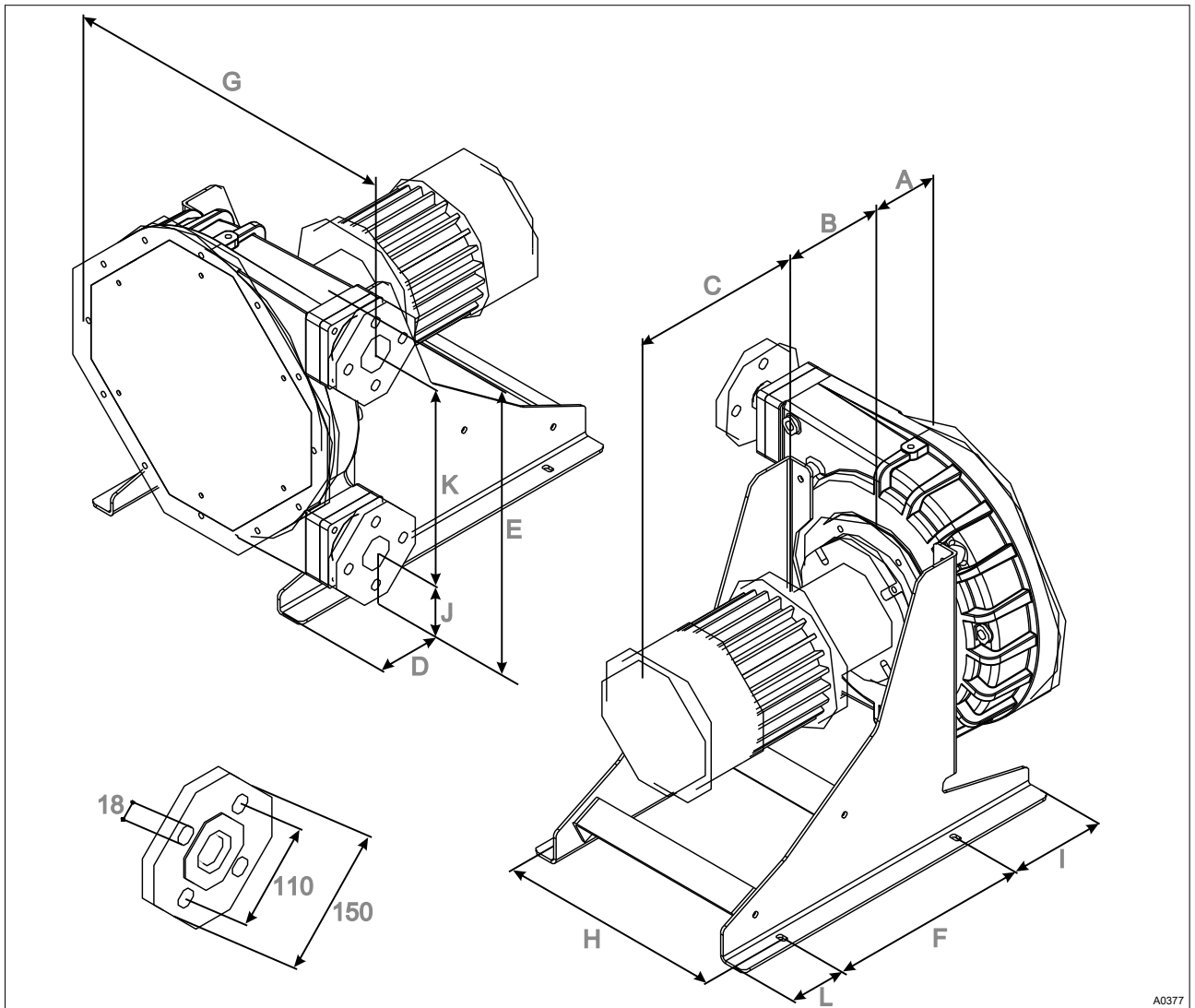
A0376

Fig. 15: Dimensions DFCa 040

A	135 mm
B	*
C	*
D	70 mm
E	613 mm
F	345 mm
G	552 mm

H	385 mm
I	170 mm
J	130 mm
K	330 mm
L	95 mm
M	1 1/2"
*	Dependent on selected drive

8.3 Dimensions DFCa 050



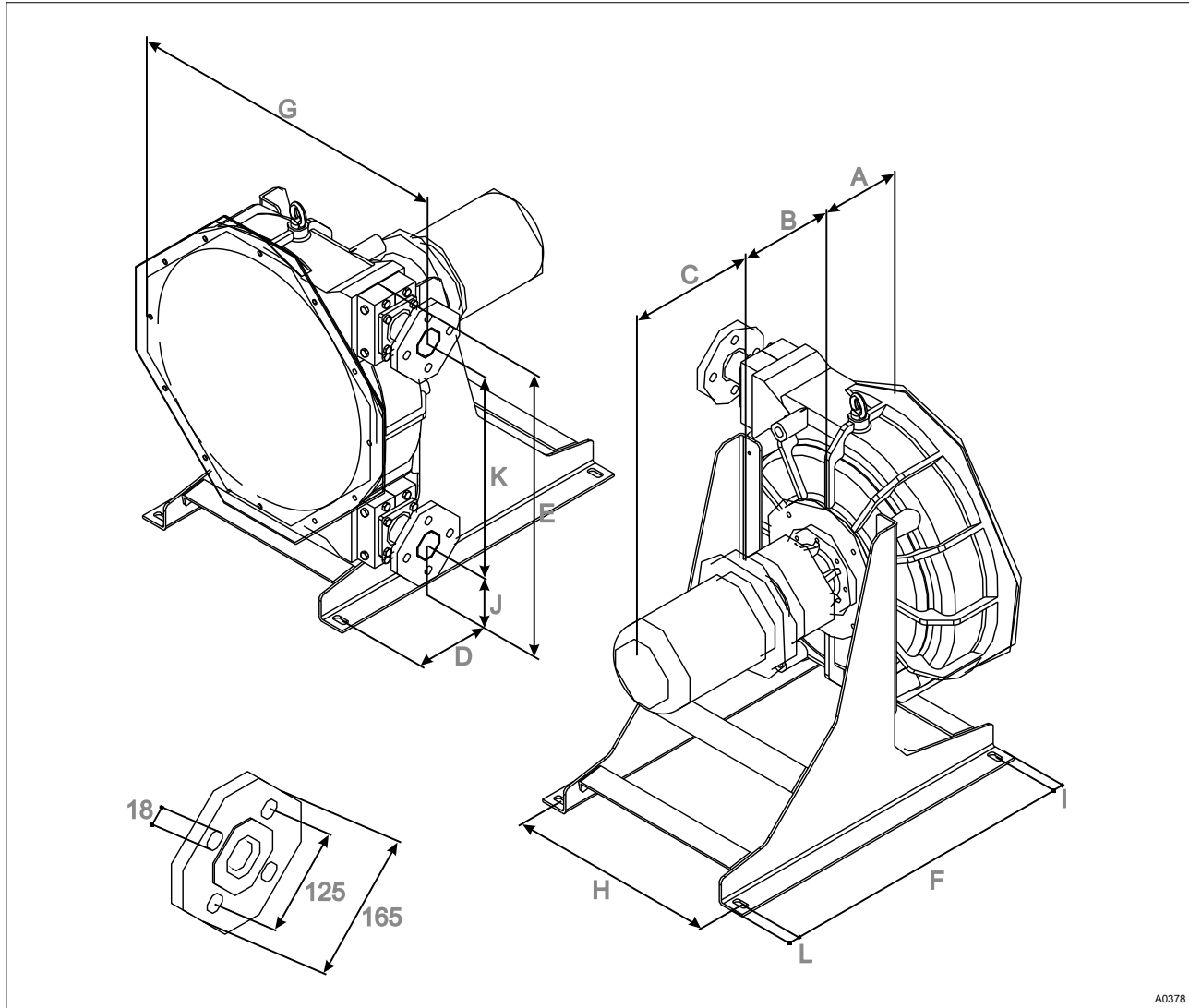
A0377

Fig. 16: Dimensions DFCa 050

A	151 mm
B	*
C	*
D	79 mm
E	645 mm
F	415 mm
G	633 mm

H	453 mm
I	200 mm
J	159 mm
K	412 mm
L	115 mm
*	Dependent on selected drive

8.4 Dimensions DFCa 060



A0378

Fig. 17: Dimensions DFCa 060

A	215 mm
B	*
C	*
D	111 mm
E	805 mm
F	740 mm
G	735 mm

H	500 mm
I	25 mm
J	210 mm
K	510 mm
L	25 mm
*	Dependent on selected drive

8.5 Dimensions DFCa 070

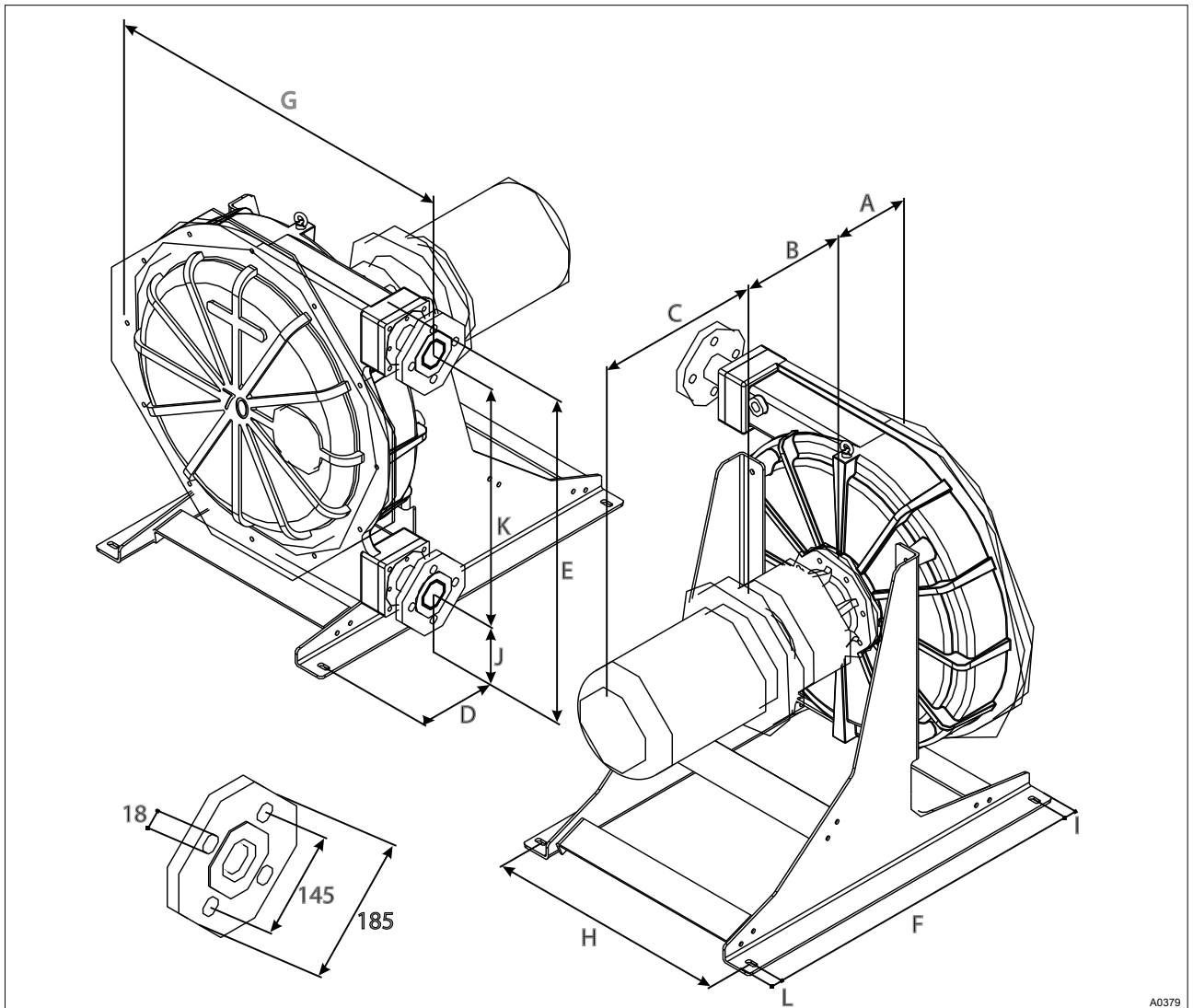


Fig. 18: Dimensions DFCa 070

A	215 mm
B	*
C	*
D	250 mm
E	1124 mm
F	1065 mm
G	1100 mm

H	790 mm
I	40 mm
J	240 mm
K	784 mm
L	40 mm
*	Dependent on selected drive