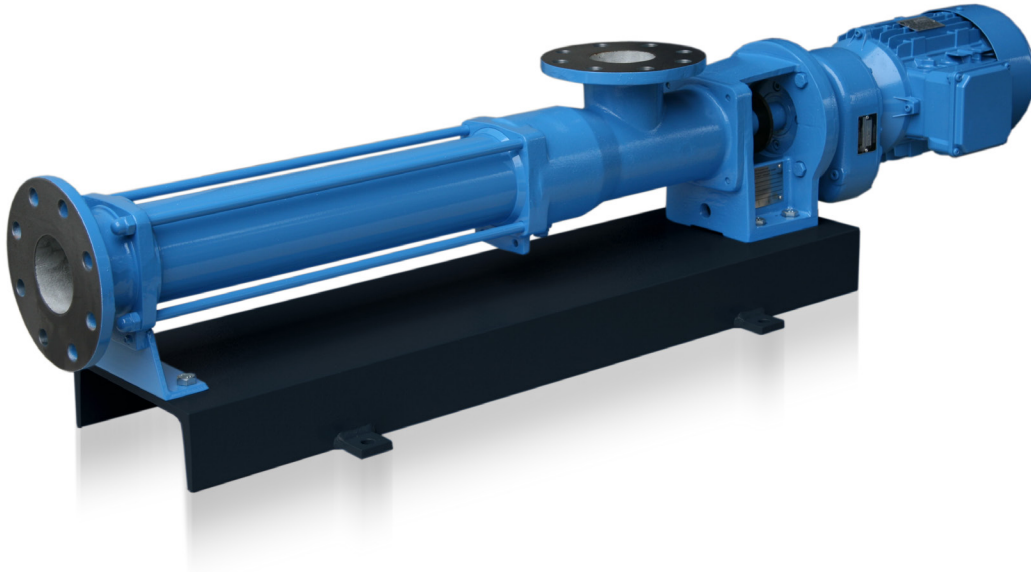


Spectra

Progressive Cavity Pumps

ProMinent®



For over 30 years ProMinent have been a specialist in the design and supply of progressive cavity pumps and systems.

ProMinent Spectra progressive cavity pumps are used globally in a wide range of industries such as water & wastewater, mining, food & beverage and the chemical industry.

With both short and long geometry designs a ProMinent Spectra pump can be supplied to meet most flow, pressure and conveying media requirements.

Our experienced engineers are able to design and manufacture a specific solution to meet your individual requirements using the very latest in 3D design programs.

Every Spectra pump is fully manufactured in Germany to the highest of European standards.

Features of ProMinent® Spectra

- Flow rates from 1 l/hour to 350 m³/hour
- Up to 24 bar discharge pressure
- Accurate metering & pumping
- Ability to pass solids & undissolved particles
- Gentle, low-shear pumping action
- Pump high viscous & high S.G. media
- Suction lifting up to 8 metres column of water (mcw)
- Reversible
- 9 different stator elastomer options
- Wide range of casing & rotor materials
- Close-coupled & long-coupled construction
- Hopper feed, vertical mount & food grade options available
- Robust cardan joints as standard
- Flanges drilled to suit preferred standard
- Custom options such as rubber lined pump casings are available
- Fully manufactured in Germany

Primary Applications

- Water & Wastewater Treatment
- Mining
- Chemical Industry
- Food & Beverage
- Pulp & Paper
- Agriculture
- Dispensing & Metering

www.prominentfluid.com.au



Joint Types

Cardan joint

Is the standard heavy duty, wear-resistant joint for Spectra progressive cavity pumps. The design of this joint ensures an extended lifetime compared to a conventional pin joint. It is encapsulated and filled with lubricant.



Bolt joint (open)

Is designed especially for hygienic applications, this joint has a minimal number of components to prevent the build up of product residue.



Bolt joint (sealed)

Is specifically for the S06, S08 and S10 pump models. This joint is sealed with rings and filled with lubricant.



Accessories

Overpressure protection

Switches off the pump when the set pressure is exceeded. It is suitable for all media and applications, including hygienic.



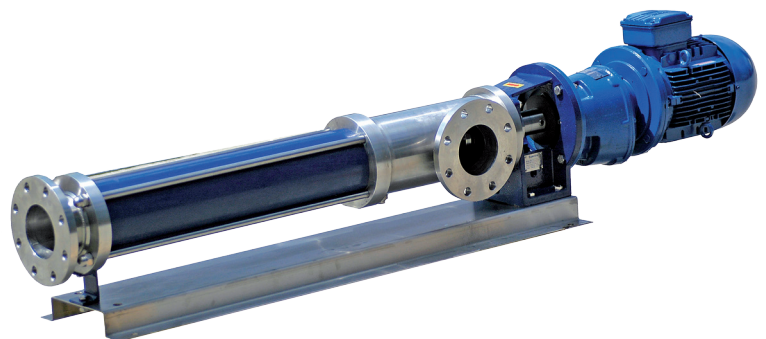
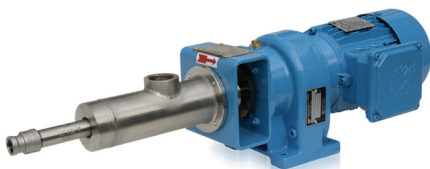
Dry run protection (conductive)

Will recognise a reduction in the suction line fluid level and immediately switch the pump off to prevent running the pump dry.



Dry run protection (thermal)

Will recognise an increase in stator temperature and immediately shut the pump down to prevent stator wear.



■ SYDNEY OFFICE

Unit 4, 4 Narabang Way,
BELROSE NSW 2085
P 02 9450 0995 F 02 9450 0996
sales@prominentfluid.com.au

■ QUEENSLAND OFFICE

Unit 1, 68 Murdoch Circuit,
ACACIA RIDGE QLD 4110
P 07 3213 1900 F 07 3272 0445
pfcqld@prominentfluid.com.au

■ VICTORIA OFFICE

Unit 1/21-22 National Drive
HALLAM VIC 3803
P 03 8795 7430 F 03 8975 7431
pfcvic@prominentfluid.com.au